

SCALE 1: 25

CHAMBER NO 2 (EXCLUDED FROM CURRENT CONTRACT SCOPE)

EXISTING WAS CHAMBER (MH-18) TO BE REFURBISHED; SEE SECTION A-A

# EMH-18

NEW VALVE CHAMBER FOR WAS RISING MAIN; SEE SECTION A-A

NEW REPLACEMENT WAS PUMP & PIPE AND VALVE CHAMBER (FITTINGS) DETAIL AS PER MECH ENG DRAWINGS

NEW 200mm Ø (OD) UPVC CL9 SEWER, LENGTH: 4.47m. REFER TO SECTIONS ELSEWHERE ON THIS DRAWING FOR INVERT LEVELS

BACKFILL AND RAISE LEVEL OF EXISTING GROUND LEVEL AS DIRECTED BY ENGINEER. BACKFILL QTY 12 m³; FREEHAUL FROM EXCAVATIONS ELSEWHERE ON SITE

NEW WAS SKIMMER BOX (STAINLESS STEEL) AS PER MECHANICAL ENGINEER'S SPECIFICATION

0.5M LONG SECTION OF WALL TO BE RAISED TO CREATE STILLING BASIN AREA FOR SKIMMER BOX; SEE SECTION FOR DETAIL

EXISTING BURIED Ø DN300 (DIA TBC); EFFLUENT WATER CARRY-OVER TO CLARIFIER. SEE NOTE 6 FOR SITE INVESTIGATIONS (PIPE JETTING, CLEANING & CAMERA SURVEY)

PRESENCE OF EXISTING VALVE TO BE CONFIRMED BY CAMERA SURVEY. SEE NOTE 6. WHERE FOUND, THE SIZE, TYPE, CONDITION AND OPERATION OF EX VALVE SHALL BE ESTABLISHED. FOR TENDER / PRICING PURPOSES: SUPPLY & INSTALL NEW DN300 GLOBE VALVE, COMPLETE WITH FITTINGS.

NEW CABLE DUCT DRAW PIT, REFER TO CABLE DUCT CIVILS DRAWINGS.

EXISTING BURIED RAS PIPE (FROM RAS SUMP); BURIED PIPE SIZE (DN200) TO BE CONFIRMED BY WAY OF SLIP TRENCH.

110 DIA UPVC CL9 (WAS-RM)

32 DIA PE100 (WASH-WATER GRAVITY)

32 DIA PE100 (WASH-WATER BOOSTED)

1.5400

1.7400

1.5000

2.0000

1.5400

2.0000

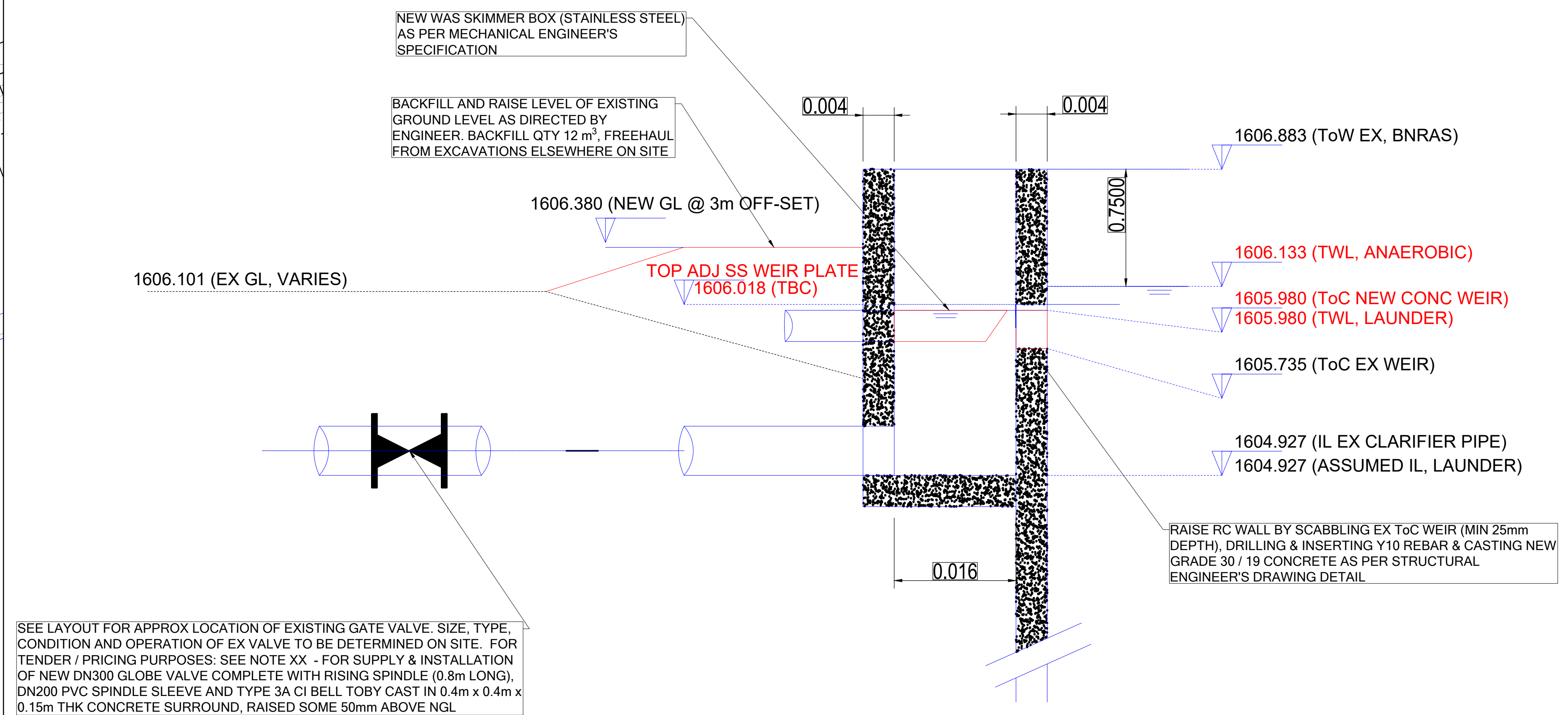
Ø3,780

Ø2,355

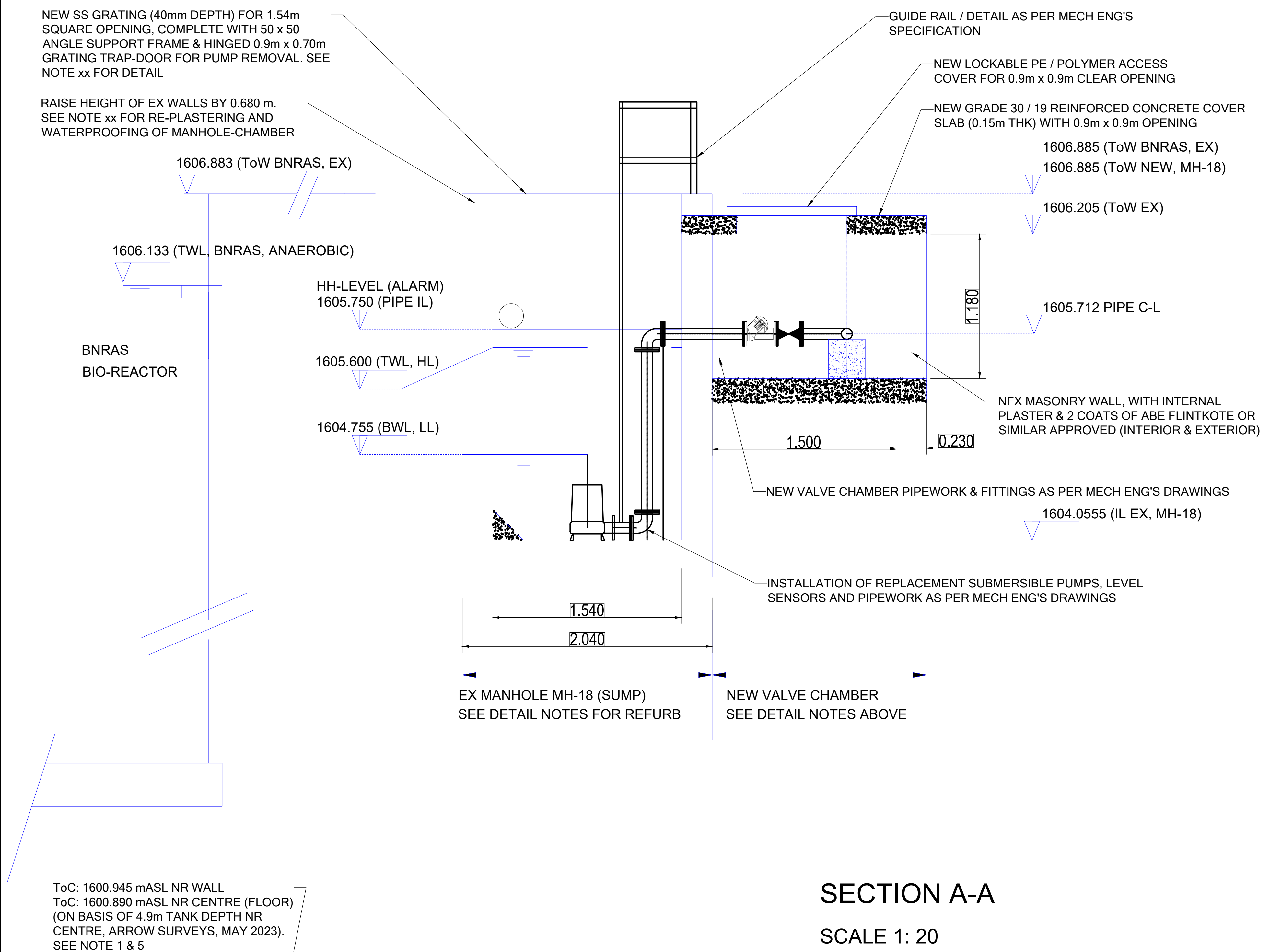
A

B

SCALE 1: 20



SCALE 1: 20

[illegible]

**LEGEND:**

WAS RISING MAIN (CENTRE LINE)

**LEGEND:**

CO: BILL OF QUANTITIES (SEE CONTRACT DOCUMENTS)  
CE: CIVIL ENGINEERING  
E: ELECTRICAL (& ELECTRONIC FOR MCC% & TELEM)  
M: MECHANICAL  
MEICA: MECH ELECTRICAL INSTRUMENTATION CONTROL &  
AUTOMATION  
ToC: TOP OF CONCRETE (NEW)  
ToC (Ex): TOP OF CONCRETE (EXISTING)  
FFL: FINISHED FLOOR LEVEL (NEW)  
TWL: TOP WATER LEVEL

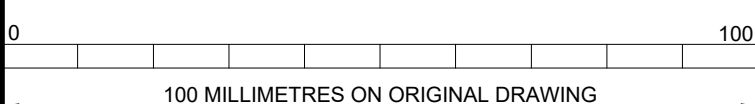
LOCAL MUNICIPALITY: MAP



SPONSOR &amp; REGULATOR: D



## ISSUE FOR TENDER



**BEFORE CONTRACT COMMENCES**

 BEFORE CONTRACT COMMENCES

100

**A AFTER CONSTRUCTION CONTRACT**

[illegible]

CLIENT / IMPLEMENTING AGENT




PROJECT  
TSHIAME WWTW REFURBISHMENT  
VCWB CONTRACT: BW298/TSHIWWTW/22

**DRAWING DESCRIPTION**

**BNRAS EFFLUENT LAUNDER & WAS PUMP  
SUMP CHAMBER - REFURBISHMENT DETAILS**

DRAWING NO.	REVISION
10909001 - 0528	T1

DESIGNED:	GM	CHECKED:	GM
		ECSA PR ENG NO: 2017/0244	
DRAWN:	HP	SCALE: AS SHOWN	A0
APPROVED:		INCEPTION DATE: 2024-10-02	
ECSA PR ENG NO: 2017/0244			
FILE PATH:		SHAREPOINT / BLOEMFONTEIN - 10600001 TSHAME WWTW / 02 CONCEPT / 04 DRAW	

ISSUE FOR TENDER